

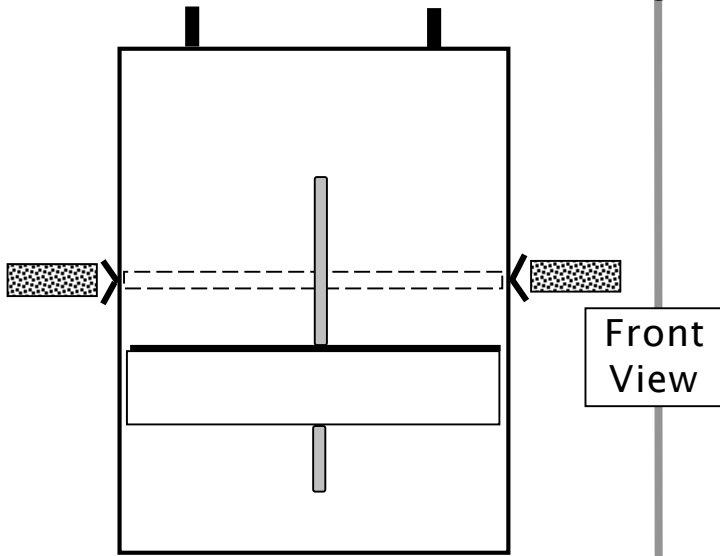
Discovery Packaging Inc

Rapid Close - Packaging Systems

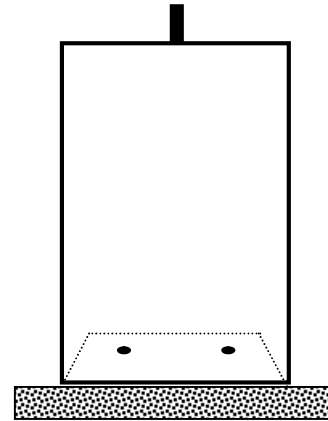
Bag Stand - Specifications



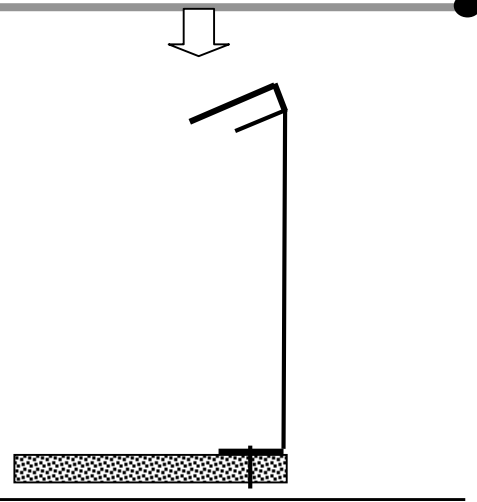
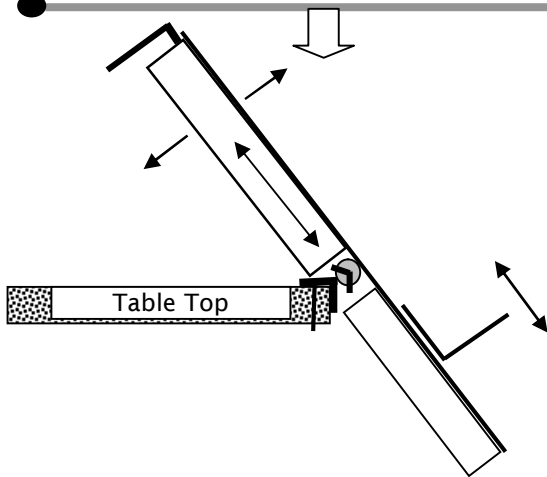
Model # - RCB-BR-01



Model # - RCB-BR-02



Side View



Material - Stainless Steel (Food Grade)
Width - 14.25" (30.6cm)
Length - 25" - (60.4cm) \ Adj. Tray - 5" - (10.3cm)
Wt of Unit - 23.4 lb (10.6 Kg)
Designed to fit the following bag sizes:
Width - Min. 3.5" (9.0cm) \ Max. 24" (60.1cm)
Length - Min. 6" (10.5 cm) \ Max. 25" - (60.4cm)

- Features:
- Works with 1 or 2 wicket lip holes
 - Attach to table top or work surface
 - Overall unit back-board is height adjustable
 - Adj. horizontal, vertical or custom angle
 - Height adjustable base tray designed to support bags during filling / closure.
 - Works with a wide variety of Rapid Close bag sizes.
 - Designed to offer super fast loading, filling and a secure bag closure

Issue Date: Oct 13/06

Material - Stainless Steel (Food Grade)
Width - 8.5" (20.1cm)
Length - 13" - (30.3cm)
Wt of Unit - 3.1 lb (1.3 Kg)
Designed to fit the following bag sizes:
Width - Min. 3.5" (9.0cm) \ Max. 14" (30.6cm)
Length - Min. 6" (10.5 cm) \ Max. 15" - (30.8cm)

- Features:
- Attached to table top or work surface
 - Designed for vertical loading of product
 - Works with a variety of Rapid Close bag sizes.
 - Custom sizes available for orders of 10 units or more
 - Value priced - starting level bag stand
 - Designed to offer fast loading, filling and